

PRODUCT COLLECTION



MMXXIII

Established in 2004, KINGFAI is an ISO9001:2015 certified one-stop manufacturer specialised in small domestic appliances.

Spanning over 200,000 sq/ft of factory area in Jiangmen city of Guangdong province, allowing up to 8 production lines running simultaneously, capable of reaching 3 million units annual productivity. Featuring our own R&D and design department, alongside with in-house tooling, injection, motor workshop and laboratory, KINGFAI strives to ensure every single unit that exits the door will meet KF's and our customer's standard of quality with confidence.

From a broader perspective, KINGFAI's grand vision is to innovate and manufacture new yet humanised solutions to all living scenarios, serving all households and individuals anywhere, anytime. We strive to focus on incubating multinational connections between local manufacturers and international customers, redefining the standards of modern manufacturing within the Asian Pacific area during the transition from industry 4.0 to 5.0, firmly putting KINGFAI's reputation as one of the most sophisticated and respectable manufacturer on the global map.

***Let's rebuild,
together.***





Assembly Workshop



Injection Workshop



Motor Workshop



R&D Dept.



Mould Workshop

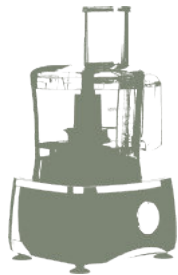


Laboratory

WHAT WE MAKE



Kitchen Machine Series 1 - 8



Food Processor Series 9 - 13



Food Chopper Series 14 - 26



Stand Mixer Series 27 - 38



Table Blender Series 39 - 46



Hand Blender Series 47 - 50





Kitchen Machine Series

KF-9103

Kitchen Machine

**600
Watts**

**PLASTIC
GEAR**

4.2L



Product Description

- 4.2 liter capacity mixing bowl
- 8 level speed control
- Interlocked smooth head lift system
- Stainless steel wire whisk
- Aluminum dough hook & beater
- 600 Watts

Product Accessories



STAINLESS STEEL BOWL
(4.2 liter)



SPATULA



ALUMINUM
DOUGH HOOK



ALUMINUM
DOUGH HOOK



ALUMINUM
BEATER



FLEXIBLE BEATER



WHISK

Product dimensions

397*272*331mm

Packing details

Paper pulp QTY/20': 732 QTY/40': 1504 QTY/40'HQ: 1632

KF-9106

Kitchen Machine



Product Description

- 3.0 liter capacity mixing bowl
- 8 level speed control
- Interlocked smooth head lift system
- Stainless steel wire whisk
- Plastic dough hook & beater
- 400 Watts

Product Accessories



STAINLESS STEEL BOWL
(3.0 liter)



DOUGH HOOK



BEATER



WHISK



SPATULA

Product dimensions

340*247*301mm

Packing details

Paper pulp QTY/20': 938 QTY/40': 1952 QTY/40'HQ: 2246

KF-9109

Kitchen Machine



Product Description

- 3.0 liter capacity mixing bowl
- 8 level speed control
- Interlocked smooth head lift system
- Stainless steel wire whisk
- Plastic dough hook & beater
- 400 Watts

Product Accessories



STAINLESS STEEL BOWL
(3.0 liter)



DOUGH HOOK



BEATER



WHISK



SPATULA

Product dimensions

361*247*300mm

Packing details

Paper pulp QTY/20': 858 QTY/40': 1766 QTY/40'HQ: 1990

KF-9110

Kitchen Machine



Product Description

- 3.0 liter capacity mixing bowl
- 8 level speed control
- Interlocked head lift system
- Stainless steel wire whisk
- Plastic dough hook & beater
- 400 Watts

Product Accessories



STAINLESS STEEL BOWL
(3.0 liter)



DOUGH HOOK



BEATER



WHISK



SPATULA

Product dimensions

354*247*311mm

Packing details

Polyfoam QTY/20': 420 QTY/40': 860 QTY/40'HQ: 900

KF-9107

Kitchen Machine

800
Watts

5.0L



METAL
GEAR

Product Description

- 5.0 liter capacity mixing bowl
- 12 level speed control
- Full metal gear mechanism
- Interlocked smooth head lift system
- Stainless steel wire whisk
- Aluminum dough hook & beater
- 800 Watts

Product Accessories



STAINLESS STEEL BOWL
(4.2 liter)



STAINLESS STEEL BOWL
(5.0 liter)



DOUGH HOOK



BEATER



WHISK



SPATULA

Product dimensions

389*260*328mm

Packing details

Paper pulp QTY/20': 732 QTY/40': 1504 QTY/40'HQ: 1632

KF-9108

Kitchen Machine

800
Watts

5.0L



METAL
GEAR

Product Description

- 5.0 liter capacity mixing bowl
- 12 level speed control
- Full metal gear mechanism
- Interlocked smooth head lift system
- Stainless steel wire whisk
- Aluminum dough hook & beater
- 800 Watts

Product Accessories



Product dimensions

377*214*356mm

Packing details

Paper pulp QTY/20': 646 QTY/40': 1304 QTY/40'HQ: 1530

KF-9116

Kitchen Machine

1000
Watts

5.0L

METAL
GEAR



MEAT GRINDER



BLENDING JAR

Product Description

- 5.0 liter capacity mixing bowl
- 12 level speed control
- Full metal gear mechanism
- With 1.5 liter blending jar
- With meat grinder, sausage maker, kebbe maker, shredder & slicer
- Stainless steel wire whisk
- Aluminum dough hook & beater
- 1000 Watts

Product Accessories



STAINLESS STEEL BOWL
(5.0 liter)



STAINLESS STEEL BOWL
(5.0 liter)



BLENDING JAR A



MEAT GRINDER



BLENDING JAR B



DOUGH HOOK



BEATER



WHISK



GRINDING MILL



SHREDDER & SLICER



SPATULA

Product dimensions

377*220*357mm

Packing details

Paper pulp QTY/20': 618 QTY/40': 1274 QTY/40'HQ: 1494

Food Processor Series



KF-9608

Food Processor

**700
Watts**

1.5L



**2
Speeds**

Product Description

- 1.0 liter capacity processor bowl
- 1.5 liter capacity blending jar
- Stainless steel shred discs boxset
- Stainless steel processing blade
- With blender, grinder, juicer, chopper, slicer, mixer, shredder
- 700 Watts

Product Accessories



Product dimensions

267*240*380mm

Packing details

Paper pulp QTY/20': 572 QTY/40': 1188 QTY/40'HQ: 1408

KF-9613

Food Processor

700
Watts

5
Speeds

1.5L



Product Description

- 1.0 liter capacity processor bowl
- 1.5 liter capacity blending jar
- Stainless steel shred discs boxset
- Stainless steel processing blade
- With blender, grinder, juicer, chopper, slicer, mixer, shredder
- 700 Watts

Product Accessories



Product dimensions

253*210*380mm

Packing details

Paper pulp QTY/20': 450 QTY/40': 928 QTY/40'HQ: 1120

KF-9611

Food Processor

**700
Watts**

1.5L



**2
Speeds**

Product Description

- 1.0 liter capacity processor bowl
- 1.5 liter capacity blending jar
- Stainless steel shred discs boxset
- Stainless steel processing blade
- With blender, grinder, juicer, chopper, slicer, mixer, shredder
- 700 Watts

Product Accessories



Product dimensions

266*234*380mm

Packing details

Paper pulp QTY/20': 450 QTY/40': 914 QTY/40'HQ: 1100

KF-9612

Food Processor

700
Watts

2
Speeds

1.5L



Product Description

- 1.0 liter capacity processor bowl
- 1.5 liter capacity blending jar
- Stainless steel shred discs boxset
- Stainless steel processing blade
- With blender, grinder, juicer, chopper, slicer, mixer, shredder
- 700 Watts

Product Accessories



Product dimensions

254*209*375mm

Packing details

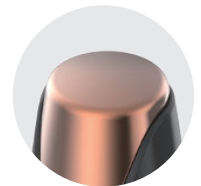
Paper pulp QTY/20': 558 QTY/40': 1134 QTY/40'HQ: 1320

Food Chopper Series



KF-9831

Food Chopper



ONE TOUCH PULSE CONTROL

(Product Accessories)



CHOPPING BLADES TREBLE-LAYER BLADES TREBLE-LAYER BLADES TREBLE-LAYER BLADES CHOPPING BLADES EGG & CREAM WHISK EGG & CREAM WHISK GARLIC SKIN PEELER DOUGH BEATER



CHOPPING CUP A (1.0 liter) CHOPPING CUP B (1.5 liter) CHOPPING CUP C (2.0 liter) CHOPPING CUP D (1.0 liter) CHOPPING CUP E (1.5 liter) CHOPPING CUP F (1.5 liter) CHOPPING CUP H (0.7 liter) CHOPPING CUP I (2.5 liter) CHOPPING CUP M (0.7 liter)

Product dimensions

216*172*345mm

Packing details

Polyfoam QTY/20': 2322 QTY/40': 4782 QTY/40'HQ: 5478

KF-9623

Food Chopper



ONE TOUCH
PULSE CONTROL

Product Description

- Double layer chopping blades
- Optional treble-layer chopping blades
- With 6 optional chopping cups
- 1.5 liter large capacity chopping cup
- With garlic skin peeler, dough beater, egg & cream whisk
- 500 Watts

Product Accessories



TREBLE-LAYER BLADES
(For 1.5/2.0 liter cup)



EGG & CREAM WHISK
(For 1.5/2.0 liter cup)



GARLIC SKIN PEELER
(For 1.5/2.0 liter cup)



DOUGH BEATER
(For 1.5/2.0 liter cup)

Product dimensions

220*172*348mm

Packing details

Polyfoam QTY/20': 2232 QTY/40': 4782 QTY/40'HQ: 5478

KF-9625

Food Chopper



ONE TOUCH PULSE CONTROL

Product Description

- Double layer chopping blades
- Optional treble-layer chopping blades
- With 6 optional chopping cups
- 1.5 liter large capacity chopping cup
- With garlic skin peeler, dough beater, egg & cream whisk
- 500 Watts

Product Accessories



TREBLE-LAYER BLADES
(For 1.5/2.0 liter cup)

EGG & CREAM WHISK
(For 1.5/2.0 liter cup)

GARLIC SKIN PEELER
(For 1.5/2.0 liter cup)

DOUGH BEATER
(For 1.5/2.0 liter cup)

Product dimensions

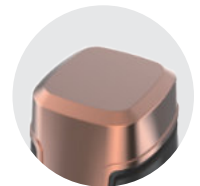
220*172*348mm

Packing details

Polyfoam QTY/20': 1656 QTY/40': 3408 QTY/40'HQ: 3858

KF-9626

Food Chopper



ONE TOUCH
PULSE CONTROL

Product Description

- Double layer chopping blades
- Optional treble-layer chopping blades
- With 6 optional chopping cups
- 1.5 liter large capacity chopping cup
- With garlic skin peeler, dough beater, egg & cream whisk
- 500 Watts

Product Accessories



TREBLE-LAYER BLADES
(For 1.5/2.0 liter cup)



EGG & CREAM WHISK
(For 1.5/2.0 liter cup)



GARLIC SKIN PEELER
(For 1.5/2.0 liter cup)



DOUGH BEATER
(For 1.5/2.0 liter cup)

Product dimensions

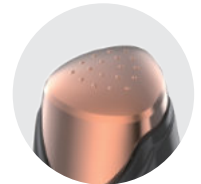
233*172*349mm

Packing details

Polyfoam QTY/20': 1656 QTY/40': 3408 QTY/40'HQ: 3858

KF-9627

Food Chopper



ONE TOUCH
PULSE CONTROL

Product Description

- Double layer chopping blades
- Optional treble-layer chopping blades
- With 6 optional chopping cups
- 1.5 liter large capacity chopping cup
- With garlic skin peeler, dough beater, egg & cream whisk
- 500 Watts

Product Accessories



TREBLE-LAYER BLADES
(For 1.5/2.0 liter cup)



EGG & CREAM WHISK
(For 1.5/2.0 liter cup)



GARLIC SKIN PEELER
(For 1.5/2.0 liter cup)



DOUGH BEATER
(For 1.5/2.0 liter cup)

Product dimensions

220*172*350mm

Packing details

Polyfoam QTY/20': 1656 QTY/40': 3408 QTY/40'HQ: 3858

KF-9635

Food Chopper



ONE TOUCH
PULSE CONTROL

Product Description

- Double layer chopping blades
- Optional treble-layer chopping blades
- With 6 optional chopping cups
- 1.5 liter large capacity chopping cup
- With garlic skin peeler, dough beater, egg & cream whisk
- 500 Watts

Product Accessories



TREBLE-LAYER BLADES
(For 1.5/2.0 liter cup)



EGG & CREAM WHISK
(For 1.5/2.0 liter cup)



GARLIC SKIN PEELER
(For 1.5/2.0 liter cup)



DOUGH BEATER
(For 1.5/2.0 liter cup)

Product dimensions

233*172*349mm

Packing details

Polyfoam QTY/20': 1656 QTY/40': 3408 QTY/40'HQ: 3858

KF-9652

Food Chopper



Product Description

- 2 speeds operation with pulse control
- Treble-layer chopping blades
- With 6 optional chopping cups
- 2.0 liter large capacity chopping cup
- With garlic skin peeler, dough beater, egg & cream whisk
- 500 Watts

Product Accessories



Product dimensions

233*172*349mm

Packing details

Polyfoam QTY/20': 1656 QTY/40': 3408 QTY/40'HQ: 3858

KF-9653

Food Chopper



Product Description

- 2 speeds operation with pulse control
- Treble-layer chopping blades
- With 6 optional chopping cups
- 2.0 liter large capacity chopping cup
- With garlic skin peeler, dough beater, egg & cream whisk
- 500 Watts

Product Accessories



TREBLE-LAYER BLADES
(For 1.5/2.0 liter cup)



EGG & CREAM WHISK
(For 1.5/2.0 liter cup)



GARLIC SKIN PEELER
(For 1.5/2.0 liter cup)



DOUGH BEATER
(For 1.5/2.0 liter cup)

Product dimensions

233*172*349mm

Packing details

Polyfoam QTY/20': 1656 QTY/40': 3408 QTY/40'HQ: 3858

KF-9655

Food Chopper



Product Description

- 2 speeds operation with pulse control
- Treble-layer chopping blades
- With 6 optional chopping cups
- 2.5 liter large capacity chopping cup
- With garlic skin peeler, dough beater, egg & cream whisk
- 600 Watts

Product Accessories



Product dimensions

234*184*377mm

Packing details

Polyfoam QTY/20': 932 QTY/40': 1928 QTY/40'HQ: 2232

KF-9661

Food Chopper



TWIN SPEED



SPINNING
CONTROL WHEEL

Product Description

- 2 speeds operation with pulse control
- Treble-layer chopping blades
- With 6 optional chopping cups
- 2.0 liter large capacity chopping cup
- With garlic skin peeler, dough beater, egg & cream whisk
- 500 Watts

Product Accessories



TREBLE-LAYER BLADES
(For 1.5/2.0 liter cup)



EGG & CREAM WHISK
(For 1.5/2.0 liter cup)



GARLIC SKIN PEELER
(For 1.5/2.0 liter cup)



DOUGH BEATER
(For 1.5/2.0 liter cup)

Product dimensions

233*172*355mm

Packing details

Polyfoam QTY/20': 1152 QTY/40': 2394 QTY/40'HQ: 2850

KF-9662

Food Chopper



Product Description

- 2 speeds operation with pulse control
- Treble-layer chopping blades
- With 6 optional chopping cups
- 2.0 liter large capacity chopping cup
- With garlic skin peeler, dough beater, egg & cream whisk
- 500 Watts

Product Accessories



Product dimensions

233*172*355mm

Packing details

Polyfoam QTY/20': 1152 QTY/40': 2394 QTY/40'HQ: 2850

KF-9650

Food Chopper

**1000
Watts**



1.5L



Product Description

- Stainless steel chopping blade
- One touch operation with pulse control
- 0.6 liter capacity chopping bowl
- Optional 1.5 liter blending jar
- 1000 Watts

Product Accessories



CHOPPING BOWL
(0.6 liter)

BLENING JAR
(1.5 liter)

Product dimensions

181*181*258mm

Packing details

Polyfoam QTY/20': 2058 QTY/40': 4290 QTY/40'HQ: 4812

KF-9638

Food Chopper

**1000
Watts**



1.5L



Product Description

- Stainless steel chopping blade
- One touch operation with pulse control
- 0.6 liter capacity chopping bowl
- Optional 1.5 liter blending jar
- 1000 Watts

Product Accessories



CHOPPING BOWL
(0.6 liter)

BLENING JAR
(1.5 liter)

Product dimensions

172*172*252mm

Packing details

Polyfoam QTY/20': 2520 QTY/40': 5184 QTY/40'HQ: 5916

Hand & Stand Mixer Series



KF-9918

Hand Mixer

350
Watts

5
Speeds



Product Description

- 5 speeds control with turbo function
- With stainless steel whisk
- Stainless steel dough hooks
- One touch easy beater ejector
- 350 Watts

Product Accessories



STAINLESS STEEL
HOOKS



STAINLESS STEEL
WHISK

Product dimensions

206*88*314mm

Packing details

Cardboard giftbox packing QTY/20': 8040 QTY/40': 10560 QTY/40'HQ: 18756

KF-9922

350
Watts

5
Speeds



Product Description

- 5 speeds operation with turbo function
- Chrome plated beaters & dough hooks
- One touch easy beater ejector
- 350 Watts

Product Accessories



CHROME PLATED
HOOKS



CHROME PLATED
BEATERS

Product dimensions

201*90*322mm

Packing details

Cardboard giftbox packing QTY/20': 8040 QTY/40': 10560 QTY/40'HQ: 18756

KF-9912

Stand Mixer

**300
Watts**

**5
Speeds**

3.5L



Product Description

- 5 speeds operation with turbo function
- Self-rotating mixing bowl
- 3.5 liter large capacity mixing bowl
- Chrome plated beaters & dough hooks
- One touch easy beater ejector
- 300 Watts

Product Accessories



ACCESSORY STORAGE BOX



CHROME PLATED
HOOKS



CHROME PLATED
BEATERS



SPATULA

Product dimensions

342*220*368mm

Packing details

Polyfoam QTY/20': 1128 QTY/40': 2316 QTY/40'HQ: 2718

KF-9913

Stand Mixer

300
Watts

5
Speeds

3.5L



Product Description

- 5 speeds operation with turbo function
- Self-rotating mixing bowl
- 3.5 liter large capacity mixing bowl
- Chrome plated beaters & dough hooks
- One touch easy beater ejector
- 300 Watts

Product Accessories



ACCESSORY STORAGE BOX



CHROME PLATED
HOOKS



CHROME PLATED
BEATERS



SPATULA

Product dimensions

342*220*366mm

Packing details

Polyfoam QTY/20': 1128 QTY/40': 2316 QTY/40'HQ: 2718

KF-9926

Stand Mixer

**400
Watts**

4.5L



**5
Speeds**

Product Description

- 5 speeds operation
- 4.5 liter stainless steel mixing bowl
- One button easy beater ejector
- Self-rotating mixing bowl
- Chrome plated beaters & dough hooks
- 400 Watts

Product Accessories



STAINLESS STEEL BOWL
(4.5 liter)



CHROME PLATED
HOOKS



CHROME PLATED
BEATERS



SPATULA

Product dimensions

335*239*392mm

Packing details

Polyfoam QTY/20': 844 QTY/40': 1764 QTY/40'HQ: 1996

KF-9512

Swinging Stand Mixer



Product Description

- 5 speeds operation with turbo function
- 3.0 liter stainless steel mixing bowl
- Auto swing technology
- Self-rotating mixing bowl
- Chrome plated beaters & dough hooks
- 300 Watts

Product Accessories



STAINLESS STEEL BOWL
(2.5 liter)



STAINLESS STEEL BOWL
(3.0 liter)



CHROME PLATED
HOOKS



CHROME PLATED
BEATERS



SCRAPER



SPATULA

Product dimensions

315*200*349mm

Packing details

Polyfoam QTY/20': 1232 QTY/40': 2532 QTY/40'HQ: 2852

KF-9513

Swinging Stand Mixer



Product Description

- 5 speeds operation with turbo function
- 3.0 liter stainless steel mixing bowl
- Auto swing technology
- Self-rotating mixing bowl
- Chrome plated beaters & dough hooks
- 300 Watts

Product Accessories



STAINLESS STEEL BOWL
(2.5 liter)



STAINLESS STEEL BOWL
(3.0 liter)



CHROME PLATED
HOOKS



CHROME PLATED
BEATERS



SCRAPER



SPATULA

Product dimensions

315*200*349mm

Packing details

Polyfoam QTY/20': 1232 QTY/40': 2532 QTY/40'HQ: 2852

KF-9517

Swinging Stand Mixer

**300
Watts**

3.0L



AST
Auto Swing Technology

**5
Speeds**

Product Description

- 5 speeds operation with turbo function
- 3.0 liter stainless steel mixing bowl
- Auto swing technology
- Self-rotating mixing bowl
- With stick blender attachment
- Chrome plated beaters & dough hooks
- 300 Watts

Product Accessories



STAINLESS STEEL BOWL
(2.5 liter)



STAINLESS STEEL BOWL
(3.0 liter)



BLENDING ROD



CHROME PLATED
HOOKS



CHROME PLATED
BEATERS



SCRAPER



SPATULA

Product dimensions

315*200*344mm

Packing details

Polyfoam QTY/20': 1232 QTY/40': 2532 QTY/40'HQ: 2852

KF-9519

Swinging Stand Mixer

**300
Watts**

4.5L



AST
Auto Swing Technology

**5
Speeds**

Product Description

- 5 speeds operation with turbo function
- 4.5 liter stainless steel mixing bowl
- Auto swing technology
- Self-rotating mixing bowl
- Chrome plated beaters & dough hooks
- 300 Watts

Product Accessories



STAINLESS STEEL BOWL
(2.5 liter)



CHROME PLATED
HOOKS



CHROME PLATED
BEATERS



SCRAPER



SPATULA

Product dimensions

373*239*377mm

Packing details

Polyfoam QTY/20': 912 QTY/40': 1872 QTY/40'HQ: 2168

KF-9521

Swinging Stand Mixer

300
Watts

4.5L



AST
Auto Swing Technology

5
Speeds

Product Description

- 5 speeds operation with turbo function
- 4.5 liter stainless steel mixing bowl
- Auto swing technology
- Self-rotating mixing bowl
- Chrome plated beaters & dough hooks
- 300 Watts

Product Accessories



STAINLESS STEEL BOWL
(2.5 liter)



CHROME PLATED
HOOKS



CHROME PLATED
BEATERS



SCRAPER



SPATULA

Product dimensions

373*239*373mm

Packing details

Polyfoam QTY/20': 912 QTY/40': 1872 QTY/40'HQ: 2168

KF-9523

Swinging Stand Mixer

400
Watts

4.5L



AST
Auto Swing Technology

5
Speeds

Product Description

- 5 speeds operation
- 4.5 liter stainless steel mixing bowl
- Auto swing technology
- Self-rotating mixing bowl
- Chrome plated beaters & dough hooks
- 400 Watts

Product Accessories



STAINLESS STEEL BOWL
(2.5 liter)



CHROME PLATED
HOOKS



CHROME PLATED
BEATERS



SCRAPER



SPATULA

Product dimensions

373*239*307mm

Packing details

Polyfoam QTY/20': 690 QTY/40': 1422 QTY/40'HQ: 1632

Table Blender Series



KF-9835

Table Blender



POWERFUL
STAINLESS STEEL
BLADES

Product Description

- Stainless steel blades
- 4 speeds operation with pulse control
- 1.5 liter capacity blending jar
- With grinding mill (Optional)
- With stainless steel filter (Optional)
- 400 Watts

Product Accessories



GLASS BLENDING JAR
(1.5 liter)



BLENDING JAR
(1.5 liter)



GRINDING MILL

Product dimensions

202*170*400mm

Packing details

Polyfoam QTY/20': 1316 QTY/40': 2696 QTY/40'HQ: 3104

KF-9851

Table Blender



400
Watts



1.5L



POWERFUL
STAINLESS STEEL
BLADES

Product Description

- Stainless steel blades
- 4 speeds operation with pulse control
- 1.5 liter capacity blending jar
- With grinding mill (Optional)
- With stainless steel filter (Optional)
- 400 Watts

Product Accessories



GLASS BLENDING JAR
(1.5 liter)



GRINDING MILL

Product dimensions

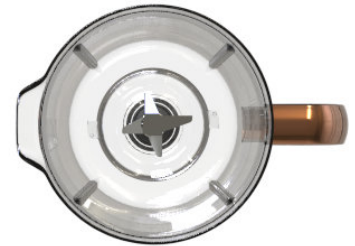
185*165*370mm

Packing details

Polyfoam QTY/20': 2052 QTY/40': 4164 QTY/40'HQ: 4560

KF-9867

Table Blender



POWERFUL
STAINLESS STEEL
BLADES

Product Description

- Stainless steel blades
- 4 speeds operation with pulse control
- 1.5 liter capacity blending jar
- With grinding mill (Optional)
- With stainless steel filter (Optional)
- 400 Watts

Product Accessories



BLENDING JAR
(1.5 liter)



GRINDING MILL

Product dimensions

202*170*400mm

Packing details

Polyfoam QTY/20': 1316 QTY/40': 2696 QTY/40'HQ: 3104

KF-9859

Table Blender

450
Watts

1.5L



POWERFUL
STAINLESS STEEL
BLADES

Product Description

- Stainless steel blades
- 4 speeds operation with pulse control
- 1.5 liter capacity blending jar
- With grinding mill (Optional)
- With stainless steel filter (Optional)
- 450 Watts

Product Accessories



GLASS BLENDING JAR
(1.5 liter)



GRINDING MILL

Product dimensions

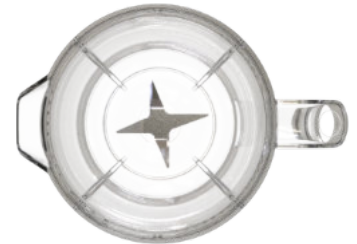
185*175*382mm

Packing details

Polyfoam QTY/20': 1692 QTY/40': 3546 QTY/40'HQ: 4140

KF-9860

Table Blender



POWERFUL
STAINLESS STEEL
BLADES



BUTTON SWITCH PANEL
(OPTIONAL)

Product Description

- Stainless steel blades
- 2 speeds operation with pulse control
- 1.5 liter capacity blending jar
- 1.0 liter capacity blending jar (Optional)
- With grinding mill (Optional)
- 350 Watts

Product Accessories



BLENDING JAR
(1.5 liter)



BLENDING JAR
(1.0 liter)



GRINDING MILL

Product dimensions

195*185*376mm

Packing details

Polyfoam QTY/20': 1686 QTY/40': 3492 QTY/40'HQ: 4104

KF-9815

Table Blender



POWERFUL
STAINLESS STEEL
BLADES

Product Description

- Deluxe stainless steel main cabinet
- 5 speeds operation with pulse control
- 1.5 liter capacity blending jar
- With backlight ring (Optional)
- With grinding mill (Optional)
- 600 Watts

Product Accessories



GLASS BLENDING JAR
(1.5 liter)



BLENDING JAR
(1.0 liter)



GRINDING MILL

Product dimensions

210*203*418mm

Packing details

Polyfoam QTY/20': 1320 QTY/40': 2724 QTY/40'HQ: 3216

KF-9819

Table Blender



POWERFUL
STAINLESS STEEL
BLADES

Product Description

- Deluxe stainless steel main cabinet
- Treble layers processing blades
- 4 speeds operation with pulse control
- 1.25 liter capacity blending jar
- With grinding mill (Optional)
- 600 Watts

Product Accessories



GLASS BLENDING JAR
(1.25 liter)



GRINDING MILL

Product dimensions

200*196*383mm

Packing details

Polyfoam QTY/20': 1578 QTY/40': 3240 QTY/40'HQ: 3744

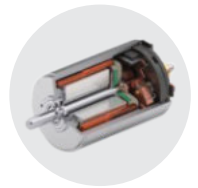
Hand Blender Series



KF-9828

Hand Blender

800
Watts



HIGH PERFORMANCE
DC MOTOR



Product Description

- Multi-function hand blender
- Blending, mixing and chopping function
- 500mL portable juicer cup
- Detachable blending rod
- 2 speeds control
- Powerful DC motor
- 800 Watts

Product Accessories



Product dimensions

55*55*398mm

Packing details

Polyfoam QTY/20': 2112 QTY/40': 4608 QTY/40'HQ: 5664

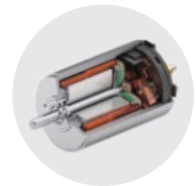
KF-9893

Hand Blender

**1000
Watts**



VARIABLE
SPEED CONTROL



HIGH PERFORMANCE
DC MOTOR



Product Description

- Multi-function hand blender
- Blending, mixing and chopping function
- Detachable blending rod
- Variable speed control
- Powerful DC motor
- 1000 Watts

Product Accessories



Product dimensions

66*78*430mm

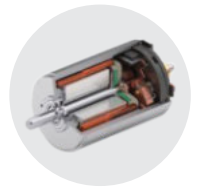
Packing details

Polyfoam QTY/20': 2304 QTY/40': 4832 QTY/40'HQ: 6040

KF-9890

Hand Blender

800
Watts



HIGH PERFORMANCE
DC MOTOR



Product Description

- Multi-function hand blender
- Blending, mixing and chopping function
- Detachable blending rod
- 2 speeds control
- Powerful DC motor
- 800 Watts

Product Accessories



BLENDING ROD

CHOPPING CUP
(0.5 liter)

TWIN BEATER

WHISK

Product dimensions

65*65*375mm

Packing details

Polyfoam QTY/20': 2112 QTY/40': 4608 QTY/40'HQ: 5664

WAH JACK TECHNOLOGY LTD.

华捷科技国际有限公司

Address: Room A, 7/F, Wilson Commercial Building, 68-70 Lockhart Road,
Wanchai, Hong Kong, China

地址：中国香港湾仔骆克道68-70号伟信商业大厦7楼A室

Tel: (852) 26439208 Fax: (852) 26439808

Email: kingfai@kingfai.com.cn

JIANGMEN KINGFAI ELECTRICAL APPLIANCE IND. CO., LTD.

江门市竞晖电器实业有限公司

Address: No. 23, Jiabao Road, Duruan Town, Pengjiang District,
Jiangmen City, Guangdong, China.

地址：中国广东省江门市蓬江区杜阮镇嘉宝路23号

Tel: (86) 750-3283328 Fax: (86) 750-3283323

Email: kingfai@kingfai.com.cn

Website: www.kingfai.com.cn



KINGFAI